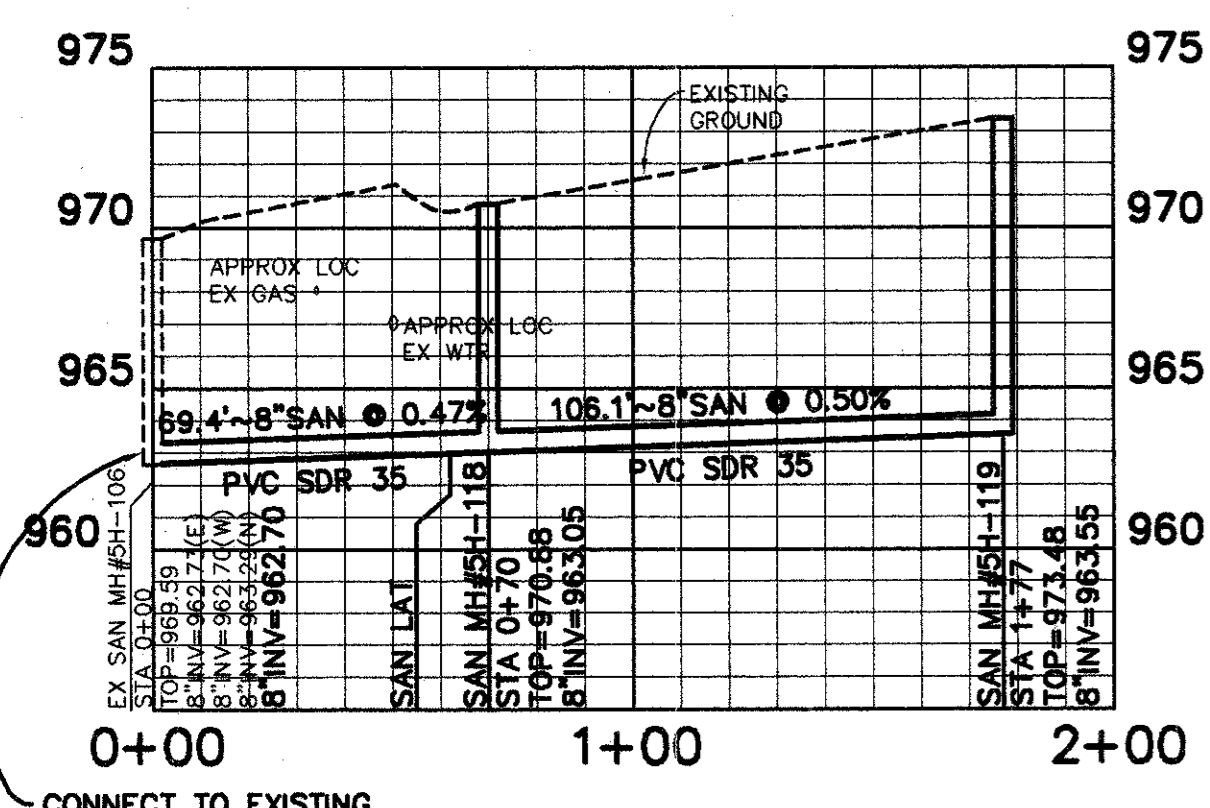
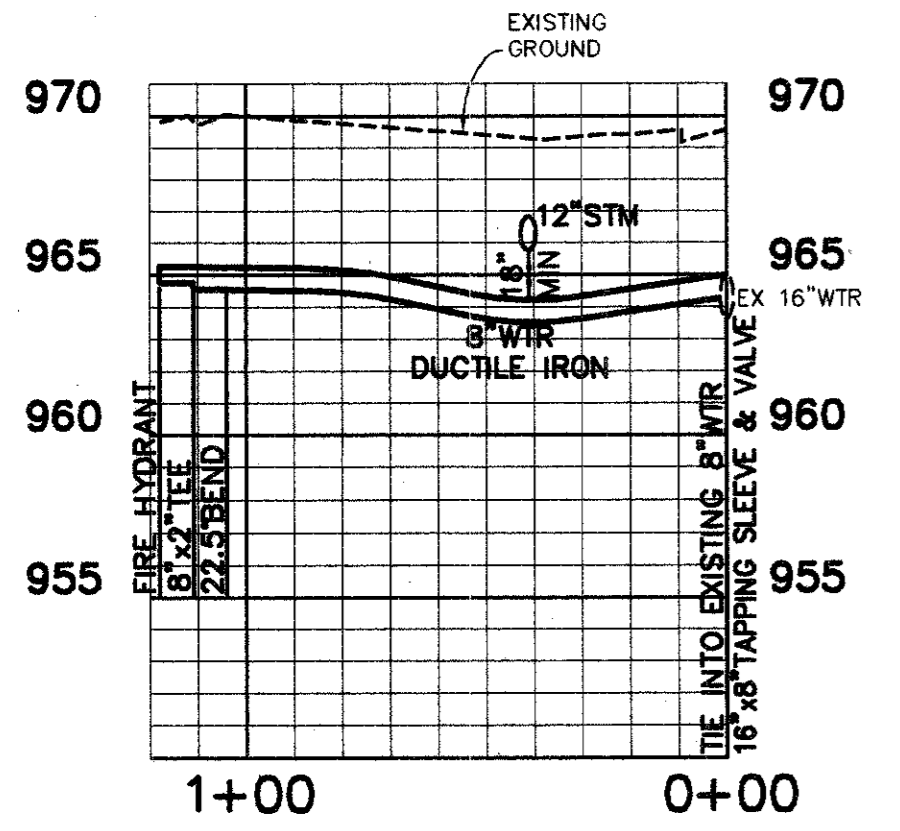
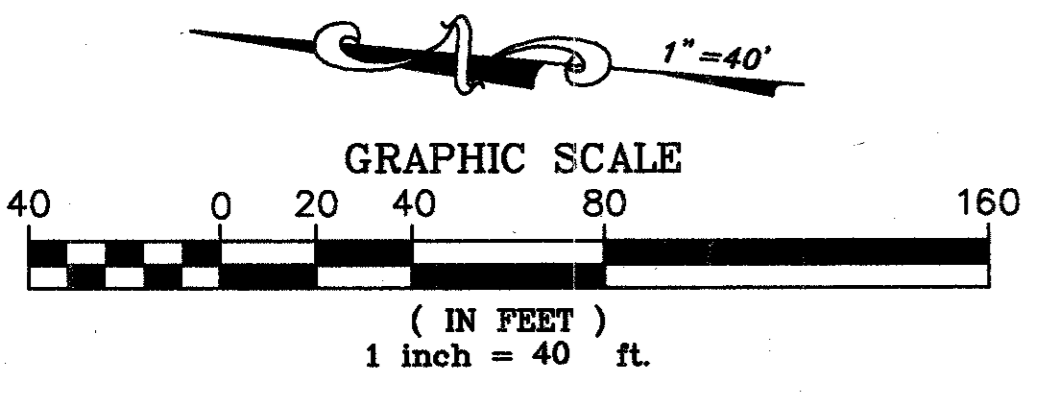
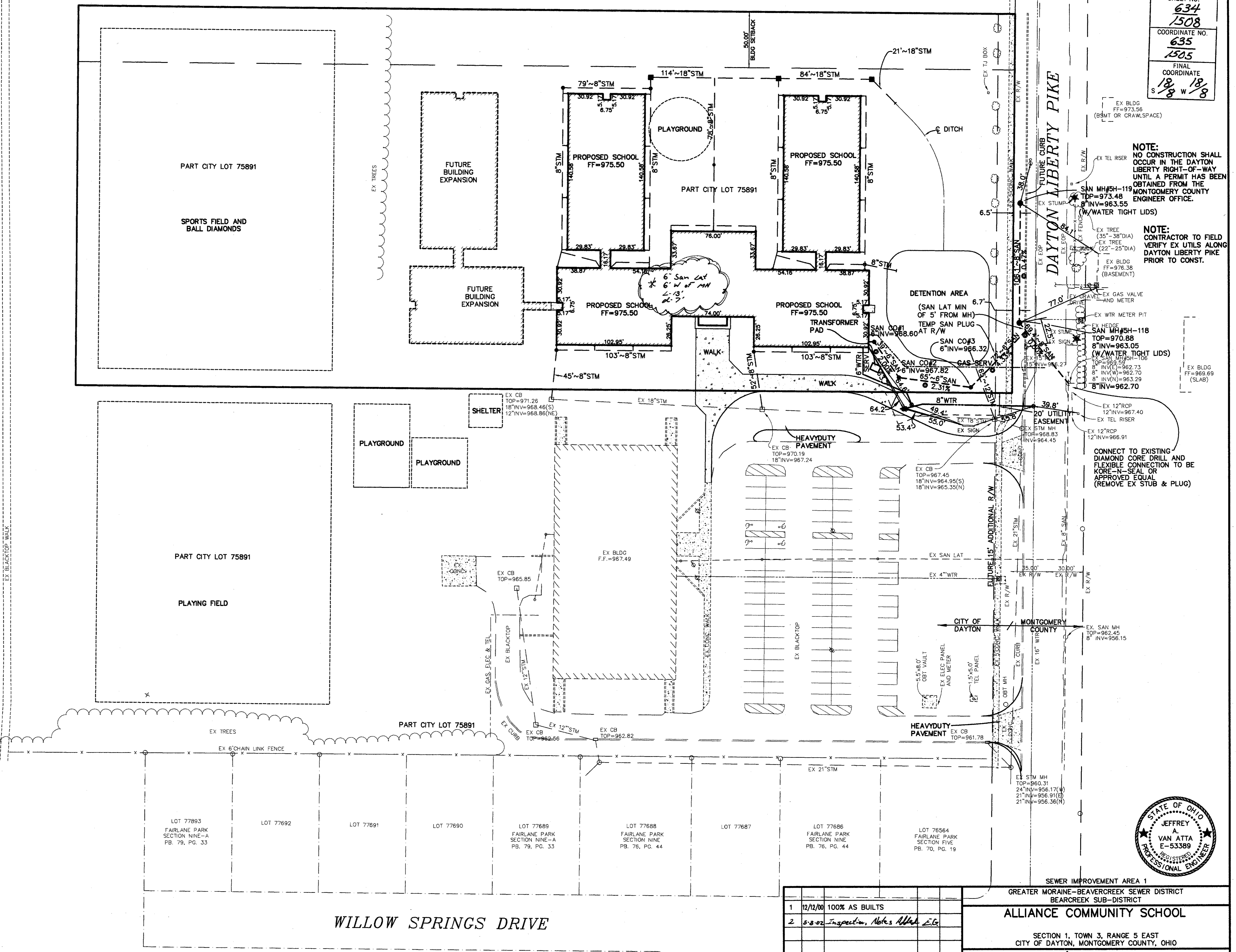


SHEET NO.
634
1508
COORDINATE NO.
635
1505
FINAL
COORDINATE
S 18 18/8
W 18/8

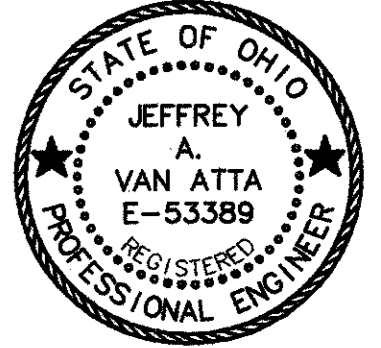


CONNECT TO EXISTING DIAMOND CORE DRILL AND FLEXIBLE CONNECTION TO BE KORE-N-SEAL OR APPROVED EQUAL
PART CITY LOT 75891



NOTE:
NO CONSTRUCTION SHALL OCCUR IN THE DAYTON LIBERTY RIGHT-OF-WAY UNTIL A PERMIT HAS BEEN OBTAINED FROM THE MONTGOMERY COUNTY ENGINEER OFFICE.
SAN MH#5H-119
TOP=973.48
8" INV=963.55
(W/WATER TIGHT LIDS)
NOTE:
CONTRACTOR TO FIELD VERIFY EX UTILS ALONG DAYTON LIBERTY PIKE PRIOR TO CONST.

EX BLDG FF=973.56 (BSMT OR CRAWLSPACE)
EX TEL RISER
EX TREE (35'-38" DIA)
EX TREE (22'-25" DIA)
EX BLDG FF=976.38 (BASEMENT)
EX GRAVEL EX GAS VALVE AND METER
EX WTR METER PIT
EX HEDGE
SAN MH#5H-118
TOP=970.88
8" INV=963.05
(W/WATER TIGHT LIDS)
EX SAN MH#5H-118
TOP=968.73
8" INV=962.70
EX SAN MH#5H-119
TOP=968.59
8" INV=962.70
EX SAN MH#5H-119
TOP=968.29
8" INV=962.70
EX 12" RCP
12" INV=967.40
EX TEL RISER
EX 12" RCP
12" INV=966.91
CONNECT TO EXISTING DIAMOND CORE DRILL AND FLEXIBLE CONNECTION TO BE KORE-N-SEAL OR APPROVED EQUAL (REMOVE EX STUB & PLUG)



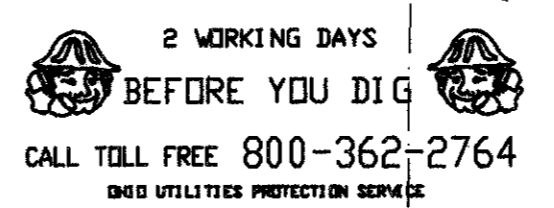
No.	Date	Revisions
1	12/12/00	100% AS BUILTS
2	5-8-02	Inspection, Notes, etc.

SEWER IMPROVEMENT AREA 1
GREATER MORAINÉ-BEAVERCREEK SEWER DISTRICT
BEARCREEK SUB-DISTRICT
ALLIANCE COMMUNITY SCHOOL
SECTION 1, TOWN 3, RANGE 5 EAST
CITY OF DAYTON, MONTGOMERY COUNTY, OHIO

Engineering & Surveying
Van Atta Engineering Inc.
245 W. Elmwood Drive Suite 202, Centerville, Ohio 45459
Phone: (937) 438-5650 Fax: (937) 438-5645

SCALE: 1"=40'
DATE: MAY 19, 1999
JOB NO. 98-705

DES. RDD
DR. DRD
CKD. DDR
FILE NO. E-130
SHEET NO. 2 OF 4



4-40