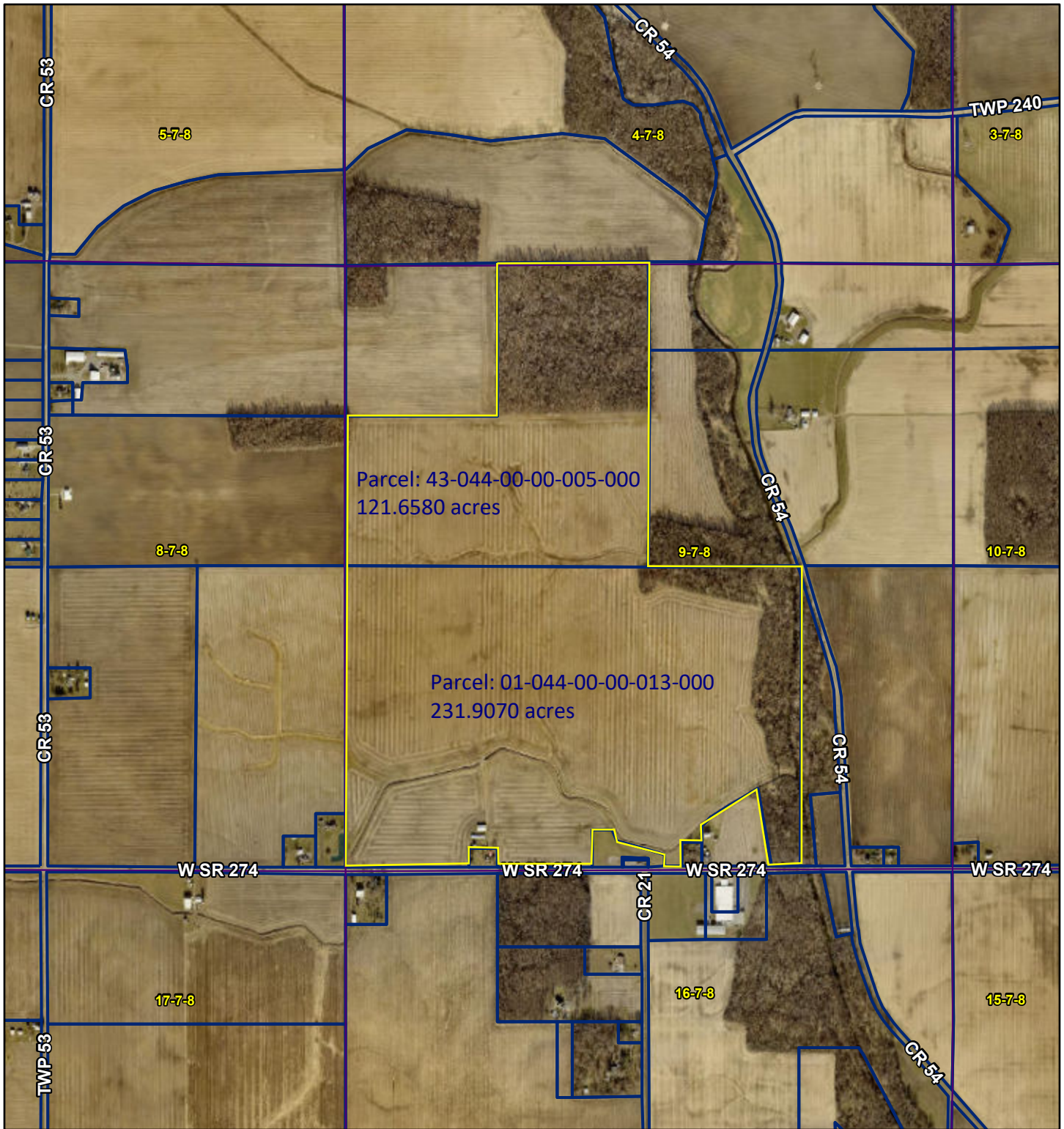


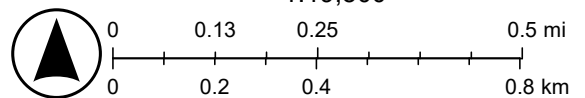
353.565 acres Logan County, Ohio GIS



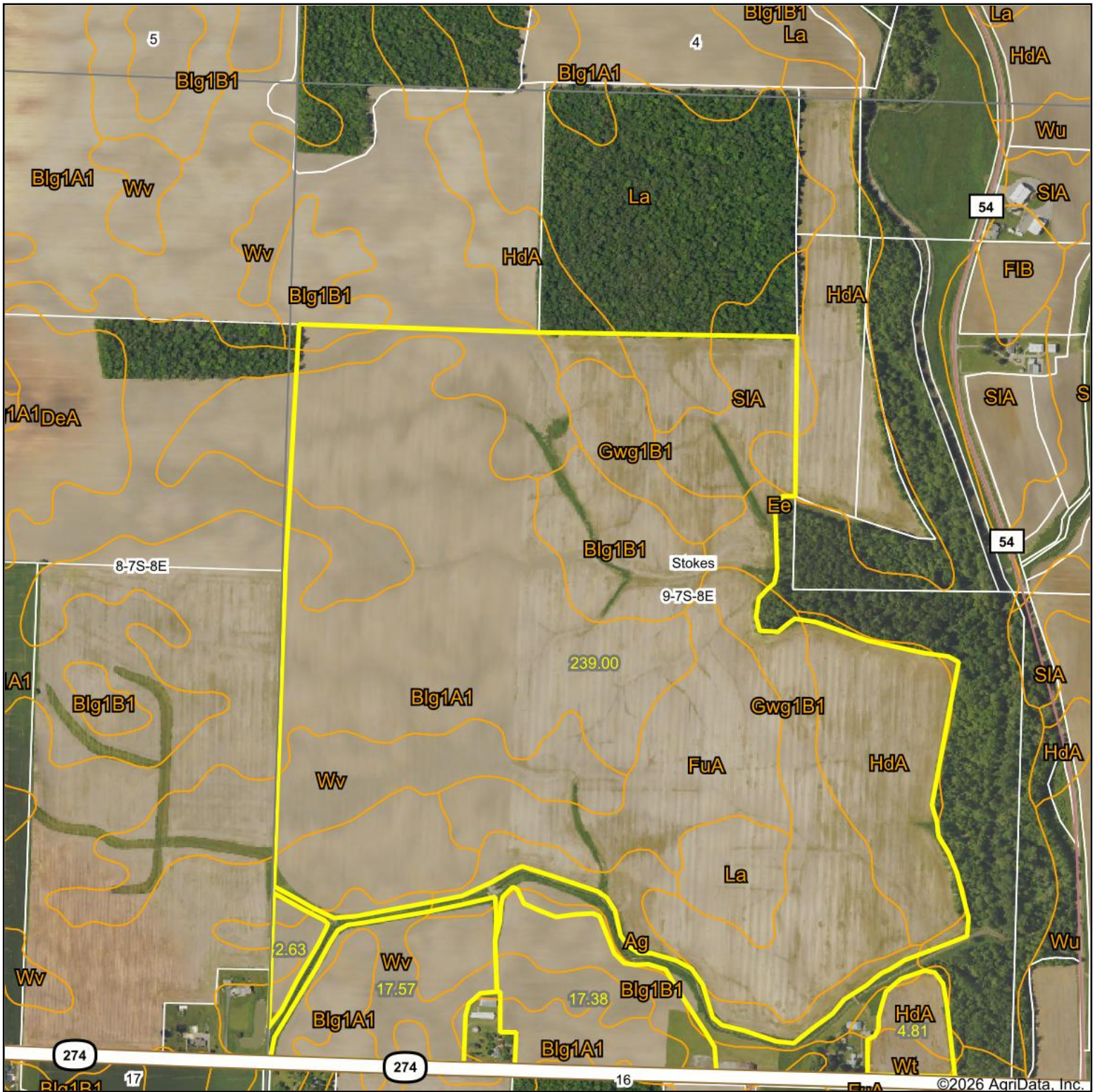
5/21/2026, 7:35:19 AM

1:19,500

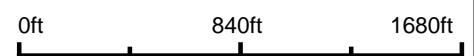
- VMS/S-T-R
- Incorporated
- Unincorporated
- Logan County Parcels
- Road Centerlines
- OHLOGA22-SID-3INCH.sid
- Red: Band_1
- Green: Band_2
- Blue: Band_3



Approximate tillable acres 281.39



Map Center: 40° 26' 49.31, -83° 57' 1.68



9-7S-8E
Logan County
Ohio



5/21/2026

Maps Provided By:
 **surety**[®]
CUSTOMIZED ONLINE MAPPING
© AgriData, Inc. 2025 www.AgriDataInc.com

Field borders provided by Farm Service Agency as of 5/21/2008.

